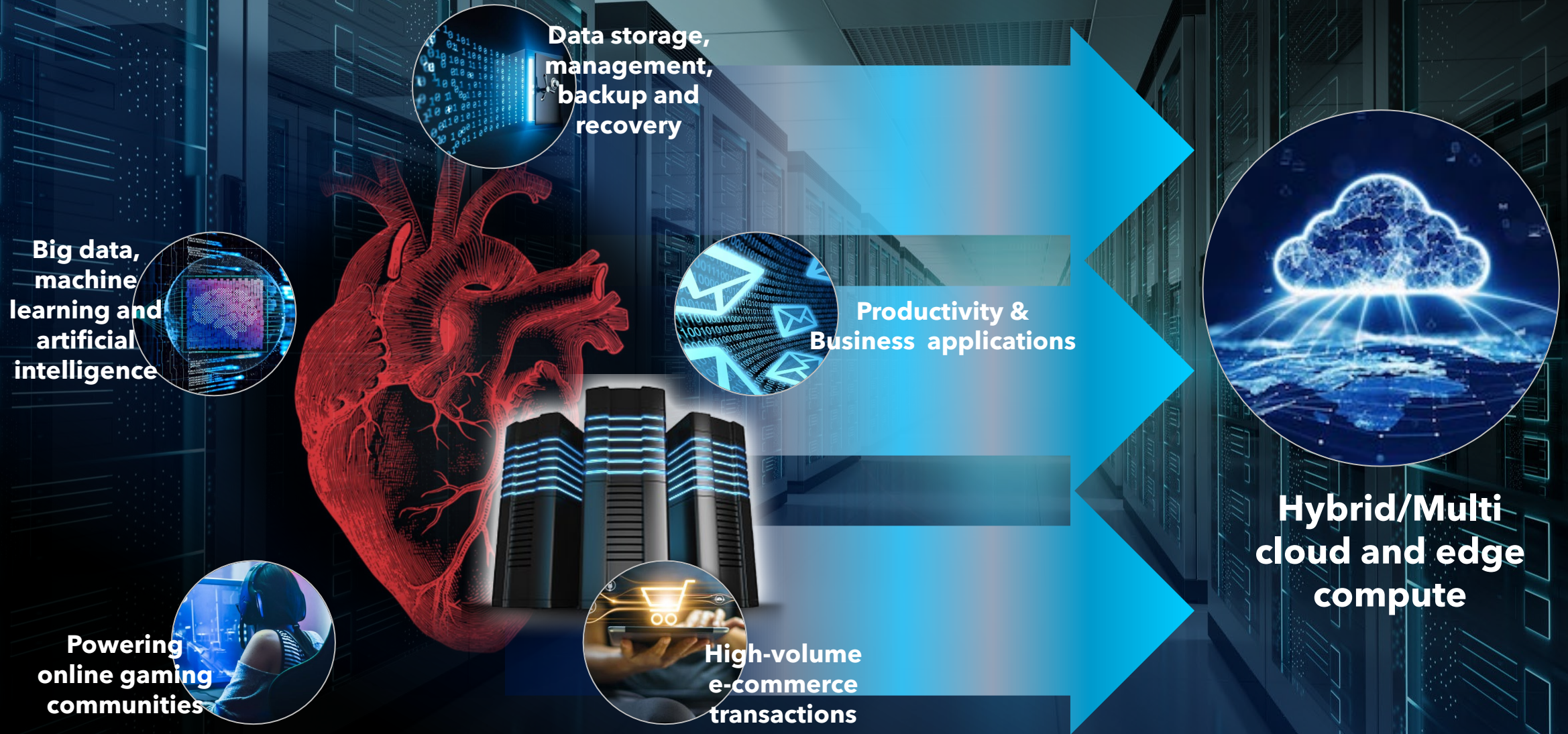


Regional Data Centre

Andrew Lim, MD Group Enterprise

31 August 2022

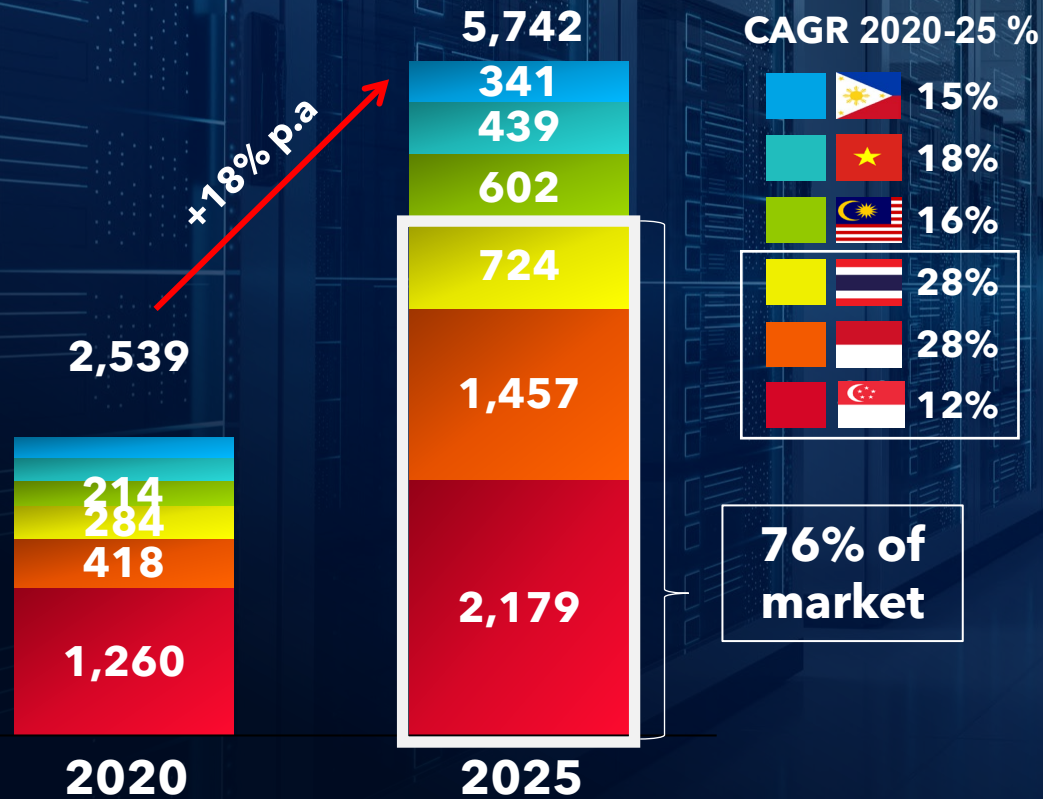
DC - The heart of the Digital economy



Attractive DC Opportunity in ASEAN

Regional DC Demand¹: Ready for Lift-Off

ASEAN DC Market
(Total Market Size USD '\$M)



(1. Source: Frost & Sullivan 2020 Forecast.)

Regional Demand Factors



Young, growing population of heavy data users

Online media & content, financial services, new applications (e.g. AR/VR)



Digital transformation by enterprises

Accelerated by 3-4 years in emerging Asia²



Big data/analytics leveraged at scale

Increasing maturity of algorithms driving big-data use cases



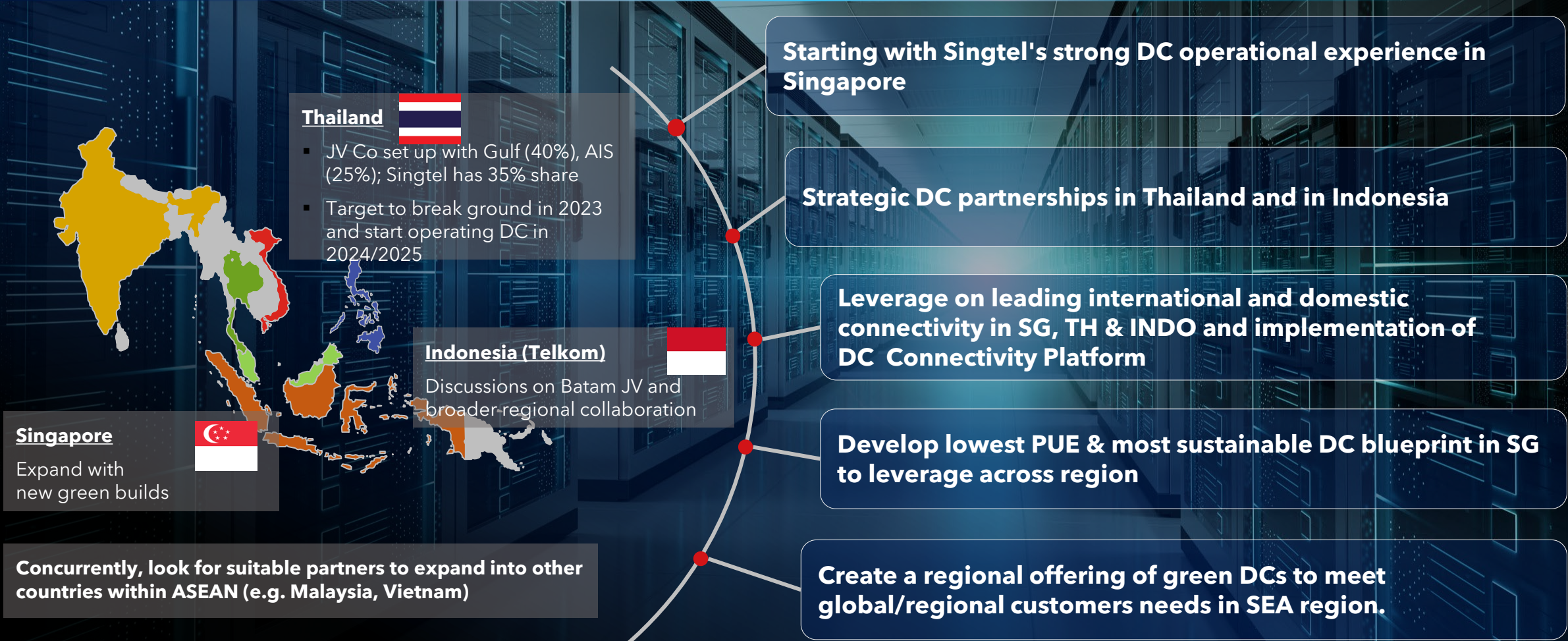
5G-driven demand for hybrid infra and increasing enterprise cloud adoption

Hyperscale cloud-based providers looking to be closer to users while meeting data residency standards

2. 2020 McKinsey Global Survey of Executives

Our Vision

To be the leading green and most sustainable DC Service Provider with the best inter-connectivity in the SEA region by FY26



Singtel is market leader in Singapore



7
Data Centres

>60MW
IT Capacity

>S\$250m
Annual Revenue¹

~60%
EBITDA Margin



- Leading DC operator in Singapore (25 years of operations)
- Strong Product And Operation Teams
- Leader in Asia Pacific network connectivity
- Top Quality Customer Service
- Developing industry greenest and lowest PUE for DC Tuas



ISO 27001



ISO 22301



ISO 9001



S S 507



MAS OSPAR Audit KC1, KC2, Bedok



BCA Green Mark Award Platinum

¹ Include 3rd Party revenue

Building a regional Green DC Blueprint

SUSTAINABILITY LEVERS

A INFRASTRUCTURE & TECH

- Adopt equipment & technology that contribute to better energy & water efficiency
- Partner with customers to deploy appropriate cooling technology

B OPS & MAINTENANCE

- Incorporate key sustainability standards throughout the asset lifecycle.
- Install IoT devices and IOT solutions

C USE OF RENEWABLE ENERGY



GEN 4

DC Tuas

PUE (design): 1.3
IT Power (MW): > 30
TIA 942 DC Tier: Rated 3

GEN 3

DC West

PUE (design): 1.4
IT Power (MW): 41
TIA 942 DC Tier: Rated 3

GEN 2

Kim Chuan 2

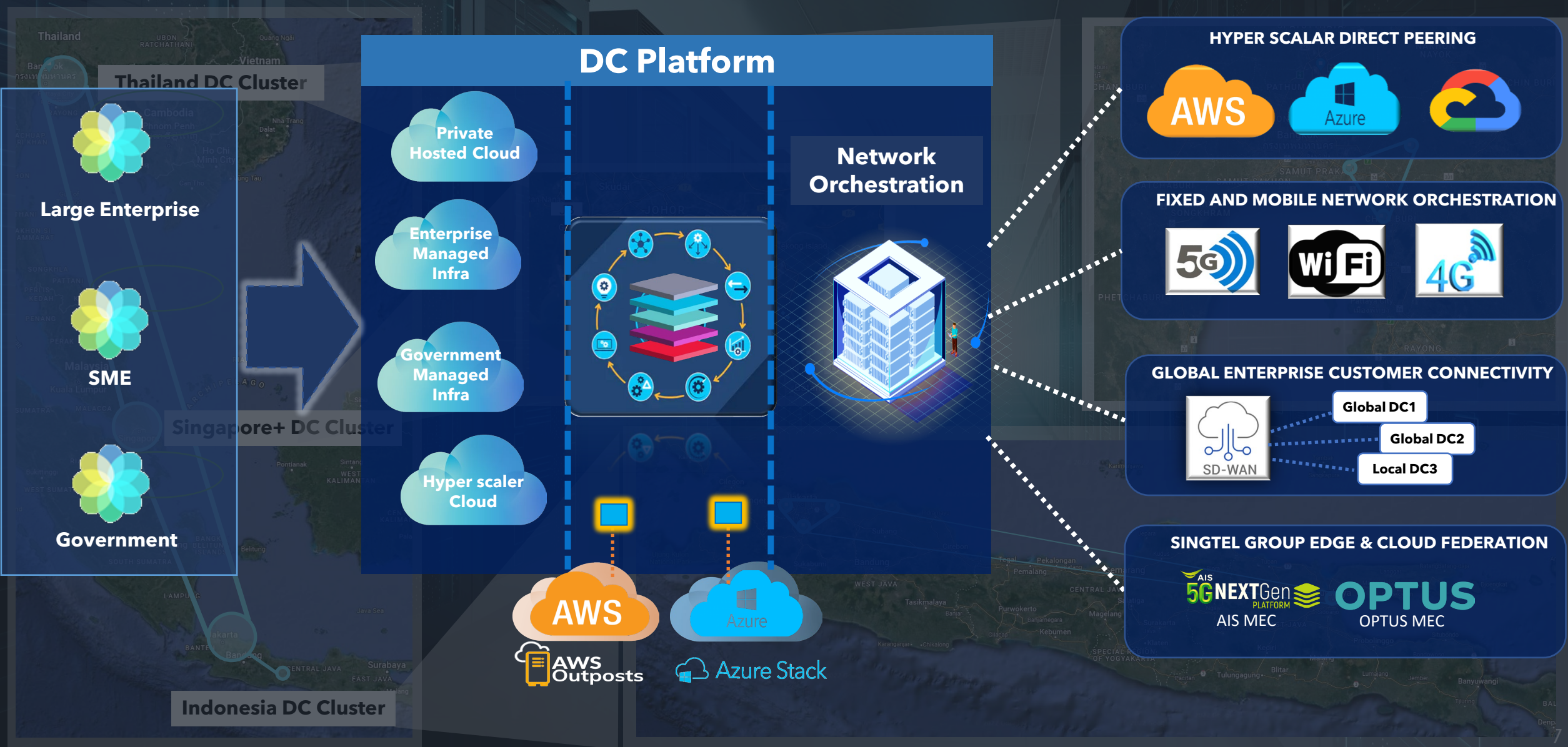
PUE (design): 1.6
IT Power (MW): 21
TIA 942 DC Tier: Rated 4

GEN 1

Others (Gen 1 DCs)

IT Power (MW): 1.1 - 5
TIA 942 DC Tier: Rated 2 and 3

Building a Regional Connected DC Platform



Regional DC Platform Plan

With strong Singapore base...


...propel into the region

Key Platform Goals




>100 MW¹

Expansion in Singapore, ASEAN countries and Beyond



>100 MW¹

Partnerships established in Thailand/Indonesia & potential Singapore pipelines



~60 MW (pipeline)

Pipeline in Singapore in next 3 years



>60 MW

Prime SG DC assets



Trusted regional one-stop shop

Single port of call for firms; standardised SLAs, interconnected DC capacity across the region



Carrier neutral with access to outstanding bundled services

Access to Singtel's wide ecosystem across connectivity, IT/managed services & cyber security



Greenest in the region

Leading operator of next gen green DC focused on sustainability



Strong partner network

Strategic, commercial and capital partners to scale optimally

Key Takeaways

Capital efficiency



- ✓ Strong capital management strategy
- ✓ Reallocating unlocked value to fuel further growth

Partnerships



- ✓ Capital
- ✓ Sustainable energy
- ✓ Local Engagement

Build on core



- ✓ Build on Singtel's DC capabilities
- ✓ Designing and Operating sustainable Green DC
- ✓ International network leadership



Singtel